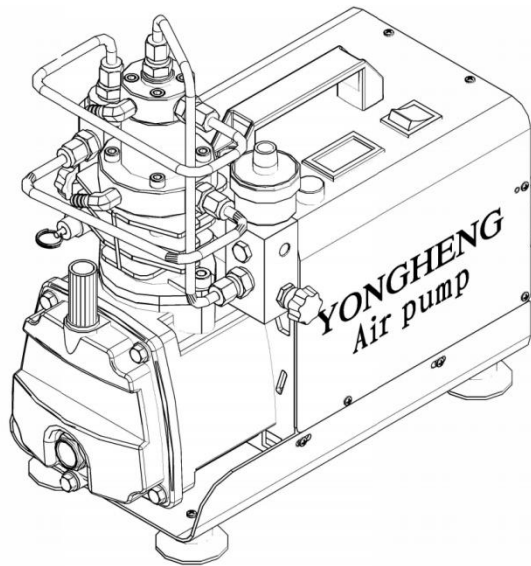


**YONGHENG**

# User Manual



**Nangtong Yongyiheng Pneumatic Co., Ltd**

## **Preamble**

Thanks for choosing Yongheng, you are now free to use the air compressor to fill your tank. Please, always be sure that the product is used according to the conditions defined in this manual, no matter who the user is, for your own security and ensure the good working of the products.

Yongheng can not be taken as responsible of any material or physical accident in case of non- respect of the delivered instructions.

Yongheng retains the right to change or to improve the manual without warning. Please get to know the current version during the usage of the product.

It is necessary to keep the utilization manual during the life of the product. You can also ask for it from Yongheng.

The end of particular paragraphs contains the mention "WARNING" to underline a specific situation which must be taken into consideration to prevent a risky situation.

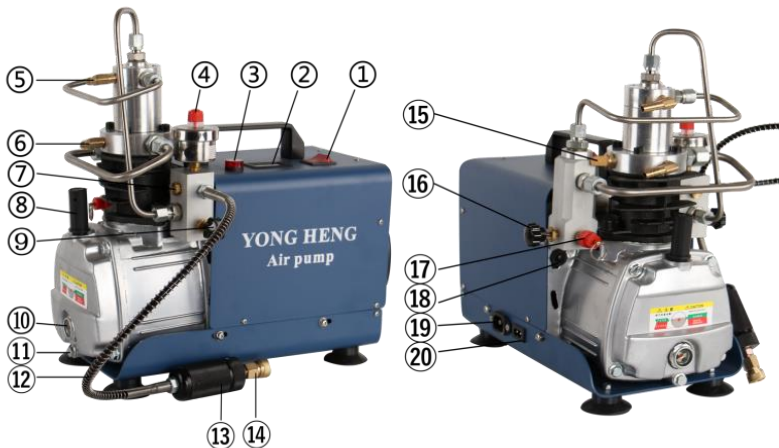
## **Table of contents**

- 1. Content of the box**
- 2. Presentation of the product**
- 3. Technical features**
- 4. Getting start**
- 5. Warnings**
- 6. Dangers and security instructions**
- 7. Repairing**
- 8. Filtration and maintenance**
- 9. Warranty**
- 10. Parts list and drawing**

## **1. Content of the box**

- 1 air compressor with its handle;
- 1 water pump;
- 2 decompression valves( auto-stop version and pre-set version); 1 decompression valve(manual stop version);
- 2 water pipes for water pump;
- 1 high pressure hose with filter;
- Repair kit(O rings, cotton filter, discs etc.);
- 1 power cable;
- Manual.

## **2. Presentation of the product**



① ON/OFF	⑪ Oil drain port
② Temperature display	⑫ High pressure hose
③ Siren	⑬ Oil/water Filter
④ Pressure gauge	⑭ 8mm quick disconnect
⑤ Water outlet	⑮ Intake air filter
⑥ Water inlet	⑯ Decompression valve
⑦ Anti explosion valve	⑰ 1st Safety valve
⑧ Oil tank cap	⑱ Overload protection switch
⑨ Decompression valve	⑲ Compressor power plug
⑩ Oil level gauge	⑳ Water pump power socket

### 3. Technical features

Alimentation voltage: 220 V - 240 V / 50 Hz or 110V / 60 Hz

Power: 1800 W

Maximum operating pressure: 300 bar (4500 psi)

Service temperature: +10 °C (50 °F) / +55 °C (131 °F)

Net weight: 16.2-18.0 kgs

Size (L x l x h): 36 x 18 x 37 cm

Flow (without filtration): 40-50 L/minutes

Cooling system: water

Lubricant oil: ISO VG46 Anti-Wear Hydraulic Oil, Mobil DTE25, Mobil 826 or equivalent

### 4. Getting start with Yongheng compressor

1. Get out of the box the Compressor, put it on a flat surface and ensure you that the compressor does not present any visible defect due to the shipping, notify the supplier if this is the case;
2. Unscrew the nut of the oil tank and introduce the oil which is ISO VG46,

the bottom of the meniscus, which indicates the oil level, has to be just above the red point; close the tank with the tap of the oil tank, wait for 10 minutes, during that you can do the following operation;

3. Connect one flexible hose of the water pump to the water enter of the compressor, after this, connect the other flexible hose at the water exit of the compressor, the way of connection does not matter;
4. Put water in a tank (a bucket can be used) and place the water pump into the water tank, the water pump has to be totally immersed in water;
5. Place the second transparent flexible hose in the water tank;
6. Screw the high-pressure flexible hose in the exit located between the manometer and the decompression valve. Before this, make sure that the white leakproof seal is set good at the exit;
7. Make sure that the ON/OFF button is in the OFF position;
8. Plug the Compressor and the water pump with the power cables;
9. During the starting up, only the water pump must be working, make sure that there is a flow of water at the outlet of the hose in the water tank.



Find the getting start video: <https://youtu.be/IyMo5teOoLc>

## **5. Warnings**

1. Before filling, make sure the voltage in nameplate meets local power supply. Check that the flexible hose is free and without any stress, make sure that the oil level is correct. Start the machine with no pressure (the pressure gauge should be 0 bar).
2. During filling, always stay next to the compressor during the filling, the displayed temperature must not be higher than 65 °C (176 °F), otherwise put the ON/OFF button in the « OFF » position. Do not touch any metal part to avoid burn risks. The water pump must always be submerged during the filling.
3. After filling, open decompression valve (let the valve in open position). Change the white cotton filter from the cartridge after every 30 minutes' filling. Disconnect the plugs if not use it again.
4. We would suggest not to run the compressor over 30 minutes per filling, and keep the temperature under 65 °C.

## **6. Dangers and security instructions**

1. Turn off Yongheng compressor after every 30 minutes working, let the compressor cool 30 minutes before re-use it;
2. If you do not change the filter, it can cause a deterioration of the quality of the pressurized air and affect the health of the user;
3. It is totally forbidden to change the replacement of the parts or to modify any feature of Yongheng compressor, except elements provided for that purpose;
4. Do not integrate Yongheng's elements on another filling equipment or inversely;

5.The Yongheng compressor must not be in contact with water, except the water pump.

6. Do not operate the compressor in a place where the air is polluted. Do not use it near gases, oils and chemicals or in dusty or sandy areas.

## 7. Repairing

During repairing, must disconnect the power cable and unscrew the decompression valve.

Problems	Solutions
The compressor cannot start without noise.	Press the overload protection switch (located next to the safety valve), restart the compressor.
The compressor cannot start with noise.	<ol style="list-style-type: none"><li>1. Check the hydraulic oil;</li><li>2. Screw the decompression valve, make sure the compressor start with no pressure.</li></ol>
The compressor begins to run but does not pressurize.	<ol style="list-style-type: none"><li>1. Check all the connectors, make sure they are tightened;</li><li>2. Check the anti-explosion valve, if there is leak, replace the valve or valve discs;</li></ol>
The compressor stops after long running.	This happens when overheating, restart machine 20 minutes later.
Pressure rises very fast during filling.	Check the outlet of compressor and inlet of tank, make sure they are open.
There is water come out from the high-pressure hose outlet.	The cotton filter needs to be replaced.



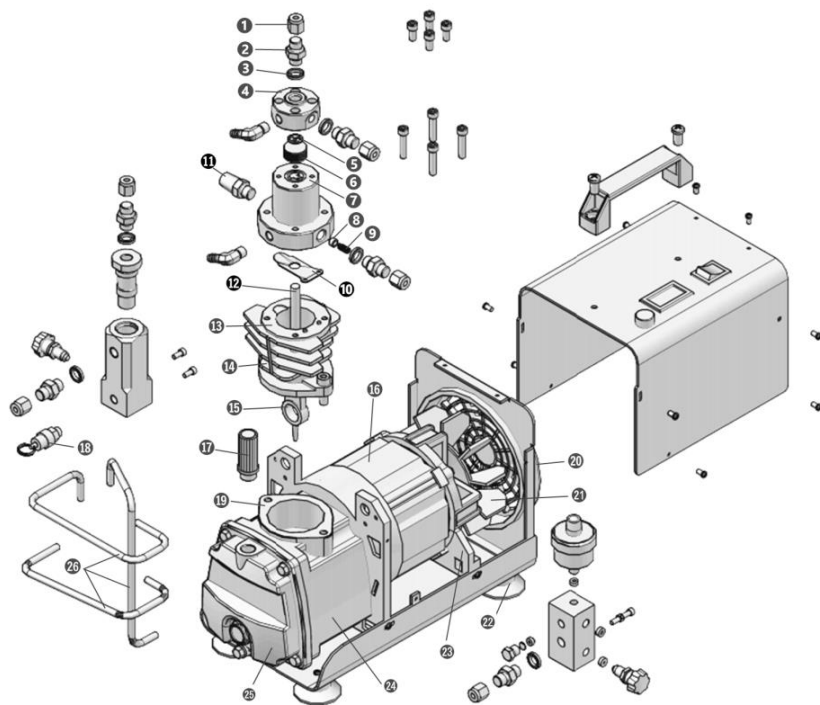
## **8. Filtration and maintenance**

- 1.The ISO VG46 hydraulic oil should be changed as soon as it changes color, each fill of oil is about 16 ounces. Change the hydraulic oil every 50 hours filling.
- 2.Change the cotton filter after 30 minutes filling;
- 3.The decompression valves should be released after every time you use the compressor;
- 4.The Yongheng compressor should not be pressurized over 300 bar/ 30 Mpa/ 4500psi;
- 5.Do no attempt to repair an element by yourself without manufacture or dealers' instruction.
6. Put the compressor in a dry and clean place, away from any oil, gas and chemical areas.

## **9. Warranty**

- The equipment is guaranteed for one year starting from the date of purchase of the products;
- In case of claim for guarantee, you must have a proof of purchase delivered by your dealer;
- The guarantee does not cover the damages caused by a faulty use or by carelessness storage;
- In a case of modification of the product by any person, he or she takes the responsibility of the repairs done on the product;
- The guarantee is available for the repair or the replacement of a piece by Yongheng, the freight charges and the packing costs are on the buyer.

## 10. Parts list and drawing



1. screw nut	14. 42mm cylinder
2. 2nd stage discharge connector	15. piston rod
3. sealing washer	16. motor cover
4. 2nd stage cylinder head	17. oil tank cap
5. 2nd stage valve shim	18. 1st Safety valve

6. 2nd stage valve base	19. down gasket
7. 2nd stage cylinder	20. ventilation hood
8. 1st stage one-way valve	21. Fan blade
9. valve spring	22. Shock pad
10. 1st stage valve shim	23. motor bracket
11. intake air filter	24. crankcase
12. 2nd stage piston	25. crankcase side cover
13. upper gasket	26. Stainless Steel pipe

**Note: All the parts are available for maintenance replacement.**